



H560

Fully Automated 5 part Hematology Analyser



Making Automation Affordable
for Labs Everywhere

www.erbamannheim.com

Upgrade to a 5 part differential and report faster with more confidence

Three part differential systems are not designed to report results on abnormal patients without the need for further testing. These investigations are complex and delay the release of critical results to the requesting clinician. The H560's five part differential count allows users to report world class results faster and with more confidence.

Manual blood film review should focus on morphology, not counting

Blood film review is a complex process and takes time to master. Adding a five part differential system to the laboratory means that valuable time at the microscope can be spent assessing morphology and other abnormalities rather than counting.

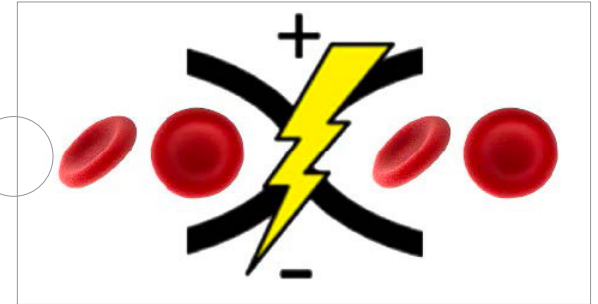
www.erbamannheim.com



Reliable

ANTI-CLOG TECHNOLOGY

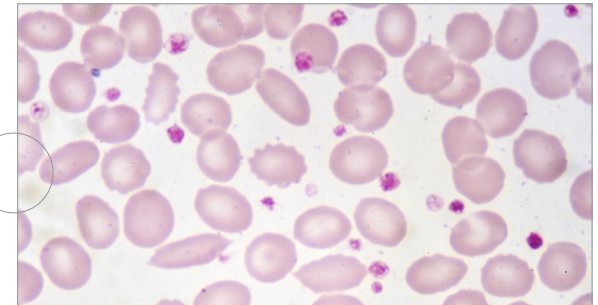
The impedance aperture is treated with a high energy pulse after each sample – reducing the risk of blockages. The H560 is able to accept sample tubes from many different manufacturers including pediatric samples.



Software

DETAILED PLATELET INFORMATION

The H560's P-LCR and P-LCC parameters allow users to report detailed information about the patient's platelet status. Six analytical processing modes mean flexibility of analysis and ensure you get the best result for your patient first time.



Functionality

REDUCE PRE-ANALYTICAL VARIABLES WITH ADDM

To ensure consistent and exact dilution of the patient sample, an automated diluent dispense mode (ADDM) has been created to help reduce errors



Efficiency

JUST 15 μ L OF ASPIRATION VOLUME

The efficient fluidics design allows the H560 to aspirate only 15 μ L. This combined with the open tube sampling aspiration means a couple of drops is more than enough.

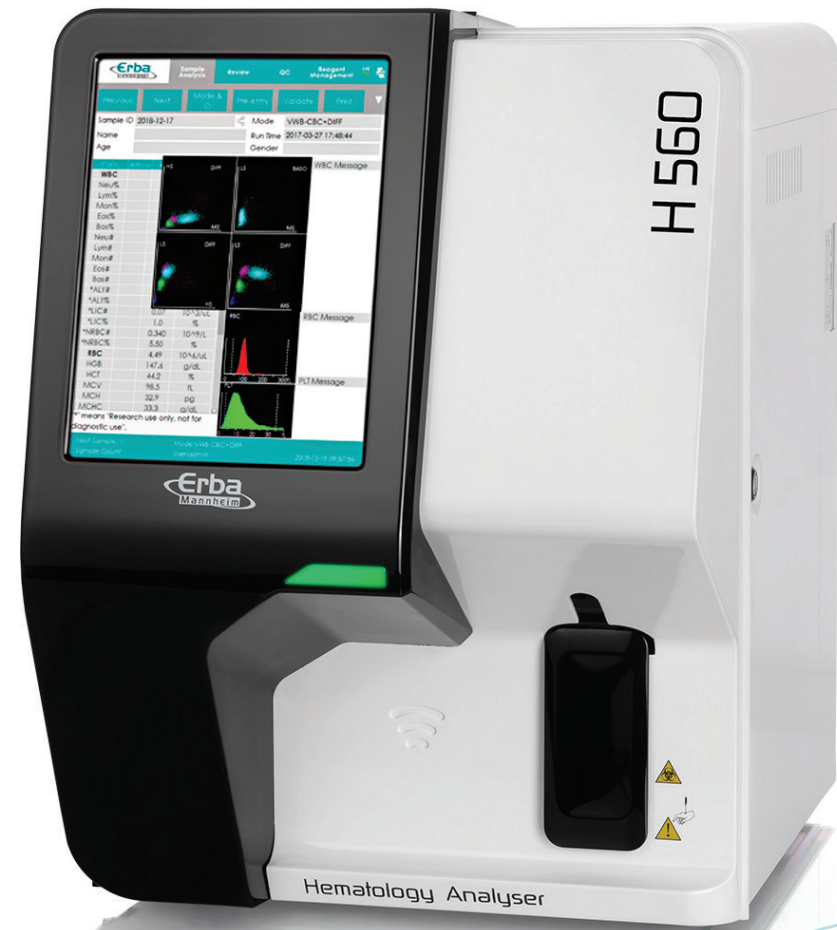
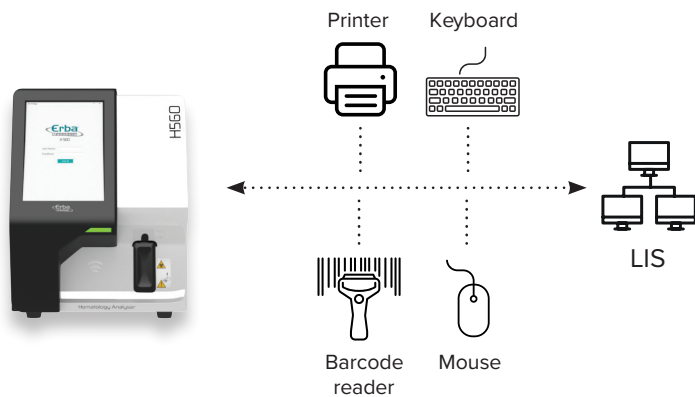


H560

5-Part Differential

The advantages of using a five-part differential system are clear – more comprehensive reporting of patient status on the first pass and less manual blood films. Improved differential result quality is achieved through counting thousands of blood cells in seconds and flagging for immature and atypical cell lines.

Erba Mannheim's range of systems can be paired to provide a powerful solution for the analysis of hundreds of samples per day.



Scan the QR code to play the video



H 560

FULLY AUTOMATED 5 PART HEMATOLOGY ANALYSER

H560

FULLY AUTOMATED 5 PART HEMATOLOGY ANALYSER

The H560 from Erba Mannheim is a next generation fully automated 5-part differential analyser designed for ease of use and premium analytical quality. The H560 features tri-angle laser flow cell technology enabling the reporting of full 5-part differentials with only three reagents. This combined with a sample volume requirement of only 15 μL and low cost per test, make the H560 one of the most efficient systems available.

EASY USER INTERFACE

- 10.4" Touchscreen
- 50.000 Reports
- 4 Scatterplots (DIFF x3, BASO)
- 3 Histograms (RBC, WBC, PLT)
- 1-click analysis
- Full traceability via RFID inventory management system

RELIABLE ENGINEERED CONSTRUCTION

- Small footprint - 364x498x431 mm
- Simple, well engineered construction
- Status indicator
- High quality components for long life
- Prevent build-up with anti-clog technology

EFFICIENT ANALYTICS

- Low aspiration volume 15 μL
- 26 reportable parameters
- Guaranteed dilution accuracy via automatic diluent dispensing
- Advanced platelet analysis (P-LCR, P-LCC, PDW-SD, PDW-CV)
- Automatic floating discriminations



TECHNICAL SPECIFICATIONS

| Analytical Modes | | Graphics | |
|--|-------------|--|--------------------|
| Manual, Predilute, Capillary | | <ul style="list-style-type: none"> 3 Histograms (WBC/RBC/PLT) 4 Scatterplots (DIFF x3, BAS) | |
| Reportable Parameters | | Sample Volume | |
| 26: WBC, RBC, HGB, HCT, MCV, MCH, MCHC, ROW-CV, ROW-SD, PLT, MPV, PDWCV, POW-SD, PCT, P-LCR, P-LCC, Neu%, Lym%, Mon%, Eos%, Bas%, Neu#, Lym#, Mon#, Eos#, Bas# | | <ul style="list-style-type: none"> Whole Blood : 15 µL CBC Only : 11 µL Pre-diluted : 20 µL Capillary : 20 µL | |
| Principle of measurement | | Linearity Range | |
| <ul style="list-style-type: none"> RBC/PLT/WBC: Electrical Impedance DIFF: 3 Angle Laser Flow Cytometry HGB: Cyanide Free Colorimetry MCV: Measured HCT: Calculated | | <ul style="list-style-type: none"> WBC (x 1QiI9/L): 0 - 300 RBC (x 1QiI 12/L): 0.00 - 8.50 Hb (g/dL) : 0 - 25.0 HCT(%): 0 - 67 PLT (x 1QiI9/L) : 0 - 3000 | |
| Calibrator | | Tri-level Controls | |
| <ul style="list-style-type: none"> ELite H Cal (3 mL) Open Vial Stability at 2-8°C: 7 Days | | <ul style="list-style-type: none"> ELite H5 CON L, N, H (3 mL) Open Vial Stability at 2-8°C: 14 Days | |
| Throughput | Weight (Kg) | QC (L-J, X-BAR) | Dimension (wxhxd) |
| 60 Tests/Hr | 26.5 | Yes | 364 x 498 x 431 mm |
| Data Storage | | Interfaces | |
| 50,000 Results with Graphs | | 4 USB + 1 LAN Port | |
| Reagents | | Operating Environment | |
| <ul style="list-style-type: none"> Erba Dil (20 L) Erba H560 Lyse 1 (200 mL) Erba H560 Lyse 2 (500 mL) Elite H Clean (50 mL) | | Temperature: 15-30°C Atmospheric pressure: 70kPa~106kPa | |
| Power Requirements | | | |
| A.C.100-240V;-50/60Hz; ≤200VA | | | |

H560 ORDER DETAILS

| Cat No | Product Name | Product Name |
|----------|--------------|---------------------|
| INS00078 | H560 | 5 Part Differential |

H-SERIES REAGENTS

| Cat No | Product Name | Volume |
|----------|-----------------|-----------|
| HEM00030 | Erba H560 Dil | 20 Litres |
| HEM00031 | Erba H560 Lyse1 | 200 mL |
| HEM00032 | Erba H560 Lyse2 | 500 mL |
| HEM00023 | ELite H Clean | 50 mL |
| HEM00024 | Erba H5 CON L | 3 mL |
| HEM00025 | Erba H5 CON N | 3 mL |
| HEM00026 | Erba H5 CON H | 3 mL |
| HEM00027 | ELite H CAL | 3 mL |

Erba Lachema s.r.o.

Karásek 2219/1d, 621 00 Brno,
Czech Republic

✉ sales@erbamannheim.com

www.erbamannheim.com



Total Solutions for Clinical Diagnostics

The Devices are in compliance with the IVDR requirements of CE marking
Version No 1.1_DD.MM.YYYY

Ref: 'LIT20.001/2022.06